

5

4

3

2

1

DRAWING NO.
40-9715HS

REVISIONS

01

ENGINEERING RELEASE

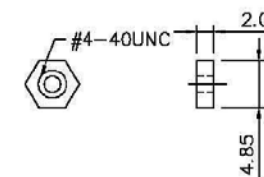
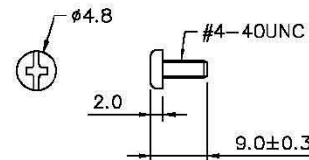
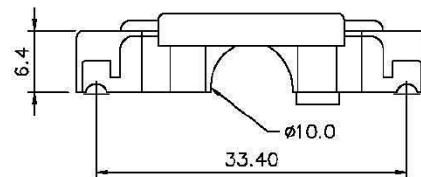
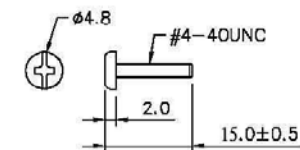
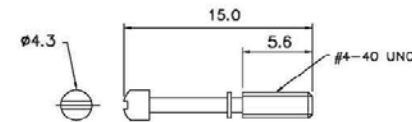
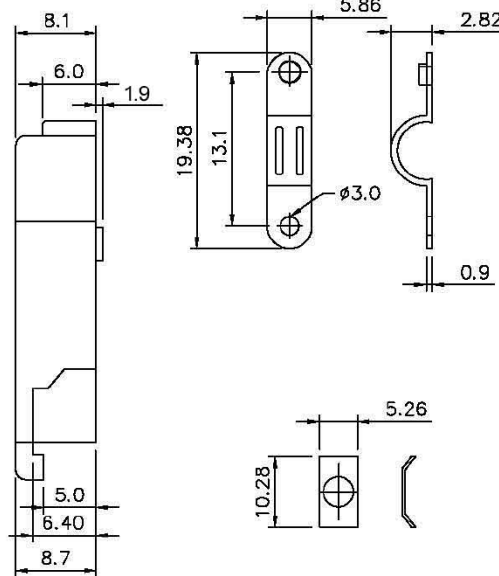
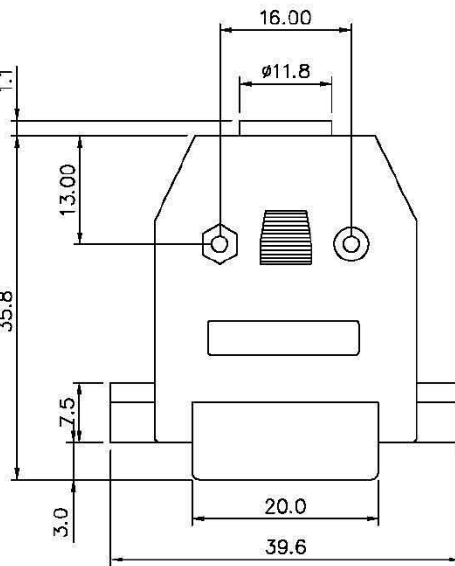
06-13-12

Y

Y

L

M



SPECIFICATIONS:


1. MATERIAL: ABS UL 94 HB (METALIZED PLASTIC NICKEL PLATED)
2. PLATING: SCREW & CLIP AND OTHER, NICKEL PLATED
3. PACKAGE: 1 SET / BAG

THIS DRAWING TO BE INTERPRETED
PER ANSI Y 14.5M - 1994

COMPANY CONFIDENTIAL

TOLERANCE UNLESS OTHERWISE SPECIFIED		DRAWN BY YUG EHU	DATE 06-13-12
DECIMALS	mm	CHECKED BY YUGE HU	DATE 06-13-12
X		APPROVED BY MA LIN	DATE 06-13-12
X.X	+0.38		
X.XX	+0.20		
ANGLES	+ 2 °	U/M mm	

THIS DRAWING WAS PRODUCED BY COMPUTER,
DO NOT SCALE DRAWING OR UPDATE MANUALLY.

 EMERSON. Network Power		Connectivity Solutions	
TITLE D-Sub Hood, Deluxe Metalized HS Series, 15 Pins			
SHEET 1 OF 1	DRAWING NO. 40-9715HS		SIZE C

Mouser Electronics

Authorized Distributor

Click to View Pricing, Inventory, Delivery & Lifecycle Information:

[Cinch Connectivity Solutions:](#)

[40-9715HS](#)